

Cochlear™ Baha® 3 Power (BP110)



Cochlear Baha 3 Power (BP110) is a fully programmable high power sound processor developed exclusively to meet the needs of patients with substantial mixed hearing loss (up to 55 dB SNHL), risk of progressive hearing loss and patients with single-sided sensorineural deafness (SSD).

The automatic signal processing and directional microphones in Cochlear Baha 3 Power help to ensure that your patients will benefit from the best signal across a variety of sound environments. Baha 3 Power is based on Baha bone conduction technology and designed to work with the Cochlear Baha implant.



Available in Champagne Blonde, Soft Black, Slate Grey, Chestnut Brown, Glacier White and Piano Black.

Features

- Fully programmable, high power head worn sound processor
- 12 channel sound analysis
- 3 user-defined programs
- Wide-band Dynamic Range Compression
- Automatic Adaptive Multi-band Directional System
- Automatic Noise Management
- Active Feedback Cancellation
- Acoustic Shock Protection
- Dynamic Output Stabilizer
- Dedicated fitting rationales for mixed loss, conductive loss and SSD
- Dedicated listening programs for music and noisy environments
- Direct Audio Input with universal Europin connector
- Patient optimized fitting with Baha Fitting Software 2.0
- Weather protected from moisture and wind noise through acoustically transparent membrane

Available Accessories

Audio Adapter

The Audio adapter allows direct input from personal stereos, TVs, MP3's and other external audio equipment.

Order no. 91180 (short cable)

Order no. 91868 (long cable)

Telecoil Unit

The telecoil unit enables access to loop facilities in homes and public buildings.

Order no. 91181

FM-Receiver

The Baha 3 Power is designed to accommodate FM receivers with single source output compatible with IEC 60118-6 and with europlug connector according to IEC 60118-12.

Ordering Information

The Cochlear Baha 3 Power is delivered in a kit that includes the sound processor with extra battery doors, abutment cover, batteries, cleaning brush, safety line and User Manual. The Baha 3 Power also comes with a small test rod that allows Baha users to 'share the experience' with friends and family.

Baha 3 Power (BP110) Sound Processors

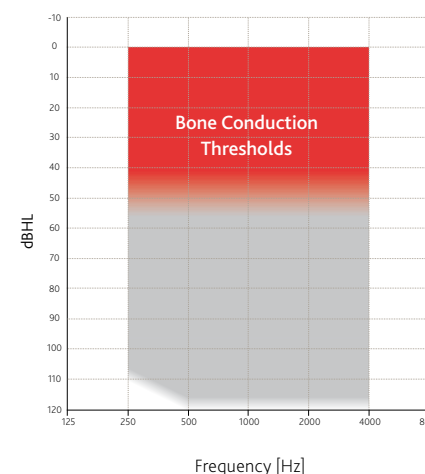
	Order no.
Baha 3 Power Champagne Blonde	92840
Baha 3 Power Soft Black	92841
Baha 3 Power Slate Grey	92842
Baha 3 Power Chestnut Brown	92843
Baha 3 Power Glacier White	92844
Baha 3 Power Piano Black	92845
Baha 3 Power Demo	92846
Baha 3 Power Dummy (<i>non-functional</i>)	92847

Baha 3 Power (BP110) Battery Doors*

	Order no. Standard Door	Order no. Tamperproof
Champagne Blonde	92832	92830
Soft Black	92833	92831
Slate Grey	92834	
Chestnut Brown	92835	
Glacier White	92836	
Piano Black	92837	
Sky Blue		93087
Peony Pink		93088
Ruby Red	93089	
Iris Purple	93090	
Ocean Blue	93091	
Apple Green	93092	

* Extra battery doors are shipped two per package. Tamperproof battery doors are shipped with a locking tool. Fun color battery doors are shipped with stickers.

Fitting Range

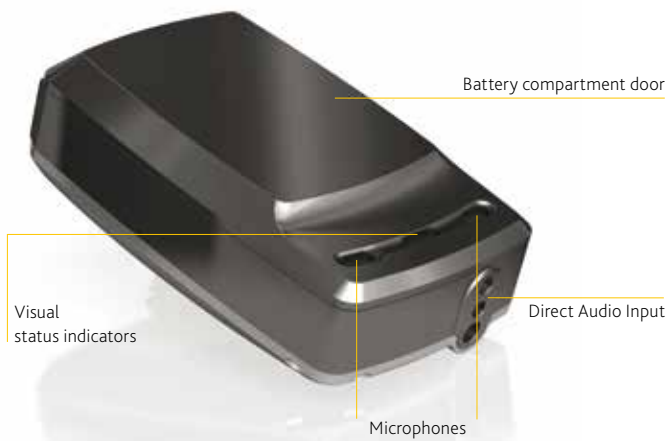


Bone-conduction thresholds ≤ 55 dB HL averaged across 500, 1000, 2000, and 3000 Hz
 Air-conduction thresholds may extend into this area

The Cochlear Baha 3 Power is suitable for individuals with bone conduction thresholds within the red area indicated in the graph. For further details, see the Candidate Selection Guide.

Hear now. And always

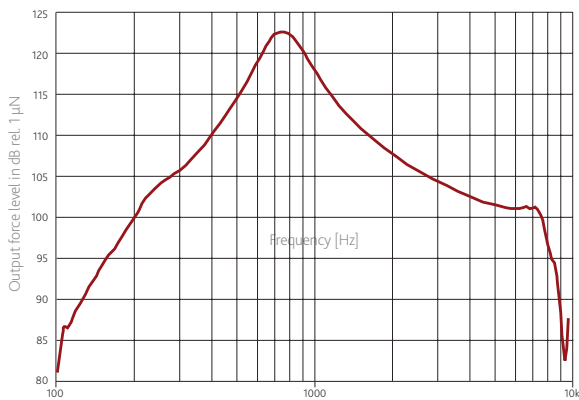




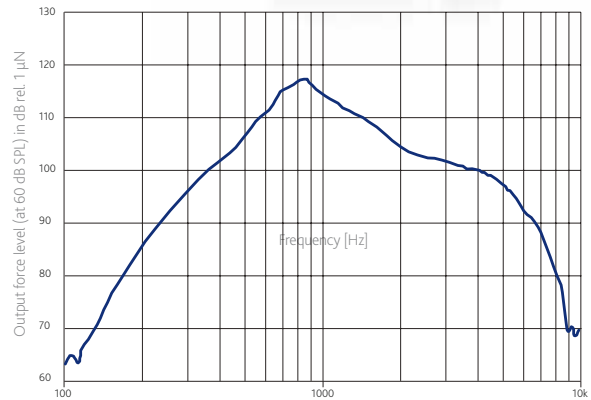
Sound processor not shown in actual size



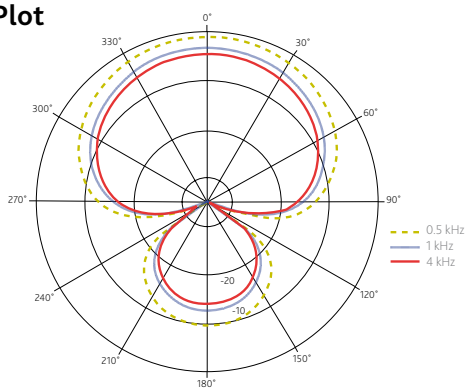
Maximum Output Force Level



Full-on Gain



Polar Plot



Polar Plot Free Field for Cochlear Baha BP110 Power Automatic Directional System

Technical Information (Measurements at full gain)

Weight, excluding battery	15.2 g
Size	36x22x12 mm
Battery voltage	1.1-1.5 V
Battery type	675
Current consumption	1.7 mA (in silence) 5.6 mA (at 60 dB SPL, 1600 Hz)
Frequency range	250-7000 Hz (ANSI 3.22)
Peak OFL at 90 dB SPL	123 dB (rel 1 μN)
Peak OFL at 60 dB SPL	117 dB (rel 1 μN)
Acousto Mechanical Gain (at 60 dB SPL, 1600 Hz)	48 dB (rel 1 μN /20 uPa)
Total Harmonic Distortion (at 60 dB SPL, reference test gain acc. IEC 60118-9)	Below 3% above 600 Hz
Equivalent Input Noise Level	26 dB (rel 20 μPa)
Electrical input equivalent to an acoustic input of 70 dB SPL	6 mV _{RMS} , 1600 Hz
Input impedance	>10 kΩ
Processing delay	3 ms

Cochlear Americas
13059 E. Peakview Avenue, Centennial, CO 80111 USA
Tel: 1 303 790 9010 Fax: 1 303 792 9025

Cochlear Canada Inc
2500-120 Adelaide Street West, Toronto, ON M5H 1T1 Canada
Tel: 1 416 972 5082 Fax: 1 416 972 5083

www.CochlearAmericas.com

