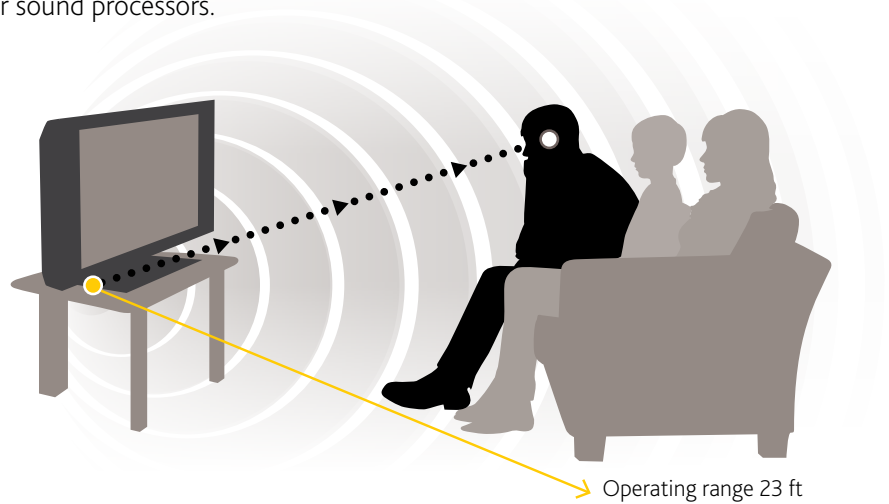


Cochlear™ Wireless TV Streamer

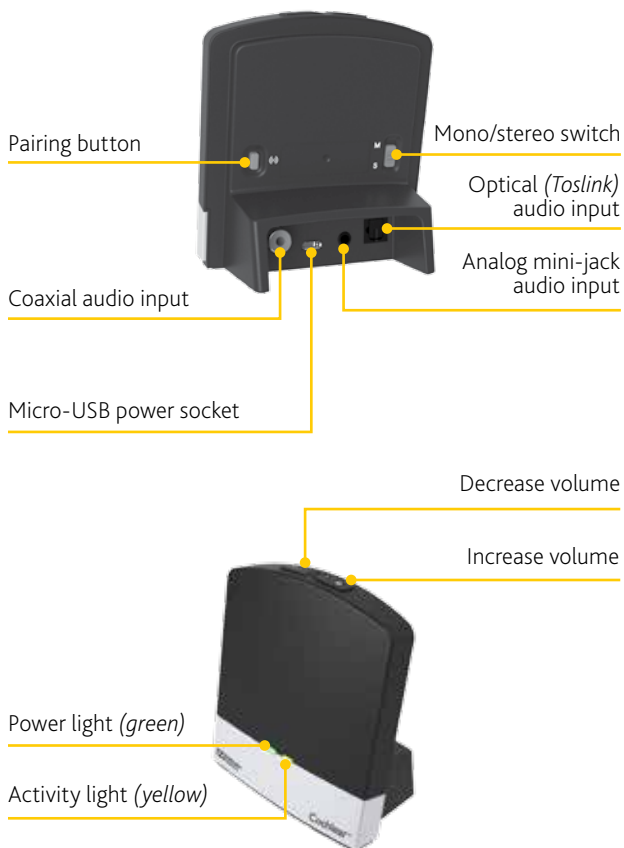
Benefits of your Cochlear™ Wireless TV Streamer

The Cochlear Wireless TV Streamer will provide you with high quality streamed audio from your TV, stereo, personal computer or similar device directly to your sound processors.

Note: The TV Streamer can be paired with several Baha Sound Processors for bilateral use, and to facilitate several users listening to the same streamer.



Product overview



Getting Started

Check with your hearing healthcare professional whether your sound processor has been paired with your TV Streamer. Previously paired sound processors do not need to be paired again. If your sound processor is not pre-paired, see below for instructions on how to easily pair it with your TV Streamer.

The TV Streamer supports both analog and digital audio inputs. Depending on your TV, HiFi stereo, computer or other audio device, the TV Streamer can be installed in several ways, as described on the following pages.

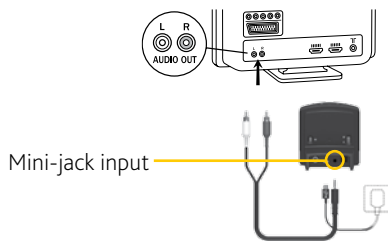
For all installations, it is necessary to:

- 1 Plug the power cord into the micro-USB socket on the TV Streamer.
- 2 Plug the other end of the power cord into an electric wall socket. Connect the TV Streamer to your audio source using one of the following 5 installations.

Using the Cochlear Wireless TV Streamer

Connecting the TV Streamer to an analog audio source (e.g. TV or HiFi stereo).

- 1 Plug the stereo mini-jack on the audio cable into the stereo mini-jack input on the TV Streamer.
- 2 Plug the other end of the audio cord into the "AUDIO OUT" terminals on the audio source. "AUDIO OUT" is usually marked "L - R" for left and right, and is normally located on the back of the audio source.

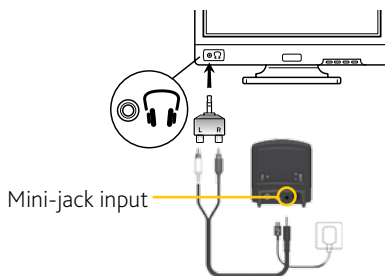


Connecting the TV Streamer to an analog audio source using a headphone mini-jack adapter.

- 1 Plug the stereo mini-jack on the audio cable into the stereo mini-jack input on the TV Streamer.
- 2 Connect the stereo mini-jack adapter to the red and white plugs at the other end of the audio cable.

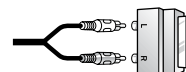


- 3 Plug the stereo mini-jack adapter into the audio source's "HEADPHONE" output terminal.

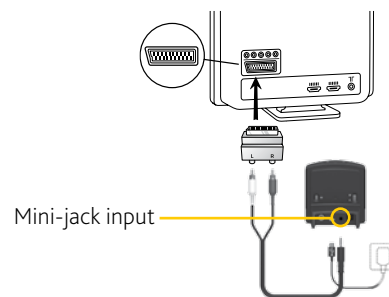


Connecting the TV Streamer to an analog audio source using a scart adapter.

- 1 Plug the stereo mini-jack on the audio cable into the stereo mini-jack input on the TV Streamer.
- 2 Connect the scart adapter to the red and white plugs on the other end of the audio cable.

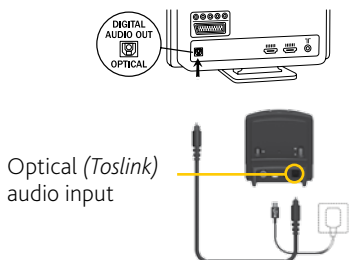


- 3 Plug the scart adapter into the audio source's scart terminal.



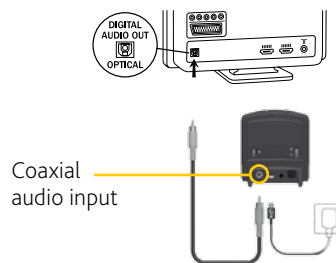
Connecting the TV Streamer to a digital audio source using the optical (Toslink) audio input.

- 1 Insert one of the plugs on the optical audio cable into the optical audio input socket on the TV Streamer.
- Note:** Most optical cables are delivered with a small protective cap to protect the tip of the plug. Please remove this protective cap before inserting the cable.
- 2 Plug the other end of the optical audio cable into the "Digital Audio Out/Optical" socket on your audio source.



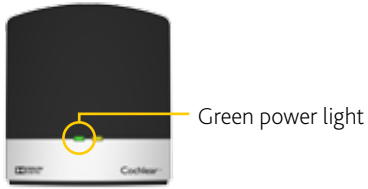
Connecting the TV Streamer to a digital audio source using the coaxial audio input.

- 1 Insert one of the plugs on the coaxial audio cable into the coaxial audio input socket on the TV Streamer.
- 2 Plug the other end of the coaxial audio cable into the "Digital Audio Out/ Coaxial" socket on your audio source.

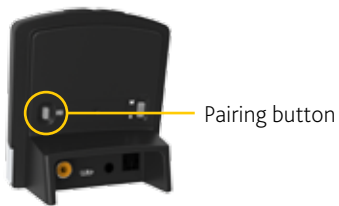


Pairing with your Baha Sound Processor

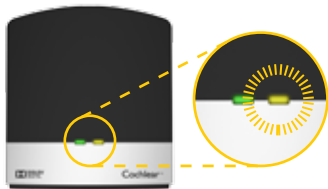
- 1 Make sure the TV Streamer is plugged into a wall socket with the green power light on.



- 2 Turn off your sound processor.
- 3 Press the pairing button on the TV streamer once to activate its pairing mode.



- 4 You can tell the pairing mode has been activated when the channel indicator is flashing. Pairing mode will be active for 20 seconds.



- 5 While the channel indicator light is flashing, turn on your sound processor.

Note: Successful pairing will be indicated by an audible melody played in your sound processor(s).

You are now ready to use the TV Streamer!

Pairing several TV Streamers to one sound processor

It is possible to pair up to three TV Streamer units with your sound processor(s).

To pair a second or third TV Streamer, follow steps

- 1 and 2 left of this column.
- 3 Then press the pairing button of the second TV Streamer **two** or **three** times.
- 4 The yellow light indicator on the front of the TV Streamer will now blink two or three times every 2 seconds to indicate it is ready to be paired in Channel 2 or 3 of the sound processor.

Pairing button pushes	LED blinking pattern				Channel
1	1	1	1	1	1
2	1 2	1 2	1 2	1 2	2
3	1 2 3	1 2 3	1 2 3	1 2 3	3

- 5 Complete the pairing process by turning on the sound processor(s).

Using the Cochlear Wireless TV Streamer

Start streaming

After installation, you can listen to streamed audio from the TV Streamer by following these simple steps:

First, switch on your TV, sound system or computer and then, press and hold down the button (long press) on your sound processor(s). If necessary, this must be done separately for each processor in order to hear streamed audio in both ears.

To stop listening to streaming audio:

Briefly press and release the button on your sound processor.

Support

For full details about the Cochlear Wireless TV Streamer, please refer to the User Manual.

For full details about the Cochlear Baha Sound Processor, please refer to the User Manual part A.



Visit www.Cochlear.com/US to learn about our full range of apps and wireless accessories.

www.Cochlear.com/US

Cochlear Americas

13059 East Peakview Avenue
Centennial, CO 80111 USA
Telephone: 1 303 790 9010
Support: 1 800 483 3123

Cochlear Canada Inc.

2500-120 Adelaide Street West
Toronto, ON M5H 1T1 Canada
Telephone: 1 416 972 5082
Fax: 1 416 972 5083

©Cochlear Limited 2016. All rights reserved. Hear now. And always and other trademarks and registered trademarks are the property of Cochlear Limited or Cochlear Bone Anchored Solutions AB. The names of actual companies and products mentioned herein may be the trademarks of their respective owners.



BUN348 ISS2 SEP16

