



Baha®

Living with
your Baha®

DVD included

Hear now. And always





Contents

- 5 How to look after your Baha® – and yourself!
- 6 After surgery
- 6 Daily cleaning
- 7 Weekly cleaning
- 8 Attaching and removing your sound processor
- 9 Protecting your abutment
- 9 Attaching a safety line
- 10 Baha and children
- 10 What is a Baha Softband?
- 12 Twelve golden rules for handling your Baha sound processor
- 14 Using phones and other accessories
- 16 What to expect from your batteries
- 17 Quick guides to the sound processors
- 20 Troubleshooting
- 21 Aftercare Kit
- 22 About the DVD



How to look after your Baha[®] – and yourself!

Your Baha[®] sound processor is a sophisticated hearing system full of delicate microelectronic components, so you must take care of it – and yourself!

This brochure shows you what to do after the surgery and how to keep your Baha sound processor and the abutment in prime condition. The procedures outlined both here and in the accompanying DVD are so easy to follow, that they'll soon become part of your daily routine.

And the rewards will be well worth the effort! With a Baha system you'll be able to hear and communicate with ease.

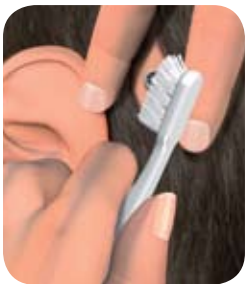
After surgery



For the best result, you need to take care of the abutment to avoid any complications with the surrounding tissue. If the area has healed, the dressing and stitches will be removed 10–14 days after surgery. If not, the dressing may have to stay in place longer:

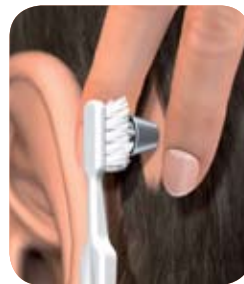
At home it is important to maintain good daily hygiene; for the first few weeks after the dressing has been removed, wash your hair carefully and use a strip of alcohol-free wet wipe to keep the skin around the abutment clean.

Daily cleaning



After the first few weeks you can start cleaning the outside of the abutment with the soft abutment cleaning brush provided. Aim the bristles at the side of the abutment, and remove any debris that might have built up around the base. You can do this while taking a bath or shower, using mild soap and plenty of warm water. It is also useful to use a strip of alcohol-free wet wipe, once you get out of the shower, to make sure all debris is removed.

Weekly cleaning



Clean the inside of the abutment every week, with the abutment cleaning brush, as debris can also build up there.

If you should experience soreness or inflammation, or if the abutment feels loose, contact your clinician or hearing care centre. Otherwise, it's a good idea to get regular check ups every six months.

Remember:

- Always rinse the abutment cleaning brush in mild soap and warm water and let it air dry. Change the brush every three months, or if you have had an infection.
- If you have bilateral implants, use two separate cleaning brushes (one for each abutment), to avoid cross-contamination.
- You can get new cleaning brushes from your hearing care centre or by contacting your Cochlear™ office.

Attaching and removing your sound processor



Your Baha sound processor is designed to snap onto the abutment. Simply attach it at a slight angle and tilt or rock it into place, taking care to keep your hair out of the way. The tilt technique reduces the pressure on the abutment and prevents any discomfort. **Make sure you never push the sound processor straight in.**



To remove the sound processor again, lift your hair, slide a fingertip under it, and gently tilt it until it snaps off. **Never pull it straight out.**

Protecting your abutment



Whenever you are not wearing your Baha sound processor, you can protect the abutment using the press-on abutment cover provided with your sound processor. Wear it when sleeping, and when having hair treatments. During rough contact sports you can wear a sweatband over the abutment for additional protection.

Attaching a safety line



When taking part in activities where you risk losing your sound processor we recommend using the safety line provided with your sound processor. Insert the line into the intended hole and fasten it to your clothing.

Note: The safety line should always be used when a Baha sound processor is worn by children.

Baha and children

Children who use a Baha system need to observe the same routines as adults. Their parents/caregivers should teach them how to keep the abutment clean and the skin around it healthy. They should also be taught the importance of keeping their Baha sound processor safe – including using a safety line to avoid losing it.

Note: According to FDA guidelines, the minimum age requirement for implantation in the United States is 5 years.



What is a Baha[®] Softband?

Until children are ready for an implant they can wear their Baha sound processor on a colourful Baha[®] Softband. This consists of an elastic headband with a plastic snap connector that holds the sound processor in place. To avoid any sore areas, this adjustable band can be turned, so the sound processor is not always in the same position. The Baha Softband provides all sorts of listening opportunities. For example, in a car seat the sound processor can be worn on the forehead to maximise sound perception.

Note: The Baha Softband contains natural rubber latex that might cause allergic reactions.



Twelve golden rules

Your Baha sound processor contains very delicate components, so you should handle it with care - and never drop it! Follow these golden rules to keep your sound processor safe:

- 1 You can wear your Baha sound processor all day long** – apart from when sleeping, bathing or during rough contact sports.
- 2 When adjusting your sound processor**, make sure your hands are clean to avoid the exterior or interior of the casing getting dirty.
- 3 When taking part in activities where you could lose your sound processor**, either remove it or use the safety line provided.
- 4 Your Baha sound processor is NOT waterproof**. Never wear it in the shower or when swimming. In rainy conditions, use an umbrella.
- 5 If visiting or living in an area with high humidity**, you can use a Dry Aid Kit (a bag or container that contains crystals that absorb residual moisture from your sound processor) to keep your sound processor in good working order.
- 6 Your Baha sound processor should not be subjected to extreme temperatures when in use.**

for handling your Baha[®] sound processor

- 7 Clean the external casing of your sound processor regularly** with an AudioWipes[®], and the snap with a small sound processor brush (both provided in the Aftercare Kit).
- 8 When using hair products like hairspray**, always cover your Baha sound processor to avoid damaging the microphone or the casing. Alternatively, remove it entirely.
- 9 To avoid feedback** (whistling), don't let objects come too close to your Baha sound processor (e.g. a hat, hairbrush, phone, glasses etc.).
- 10 To store your Baha sound processor safely** after use, remove the battery and place the sound processor in its case.
- 11 If you need an MRI scan**, it is crucial to remove the sound processor beforehand. The implant and abutment can remain in place.*
- 12 When traveling**, remove your Baha sound processor when going through security screening to avoid setting off metal detectors in places such as airports. An MRI/ Security control instructions card is included with your sound processor, which provides information for airport personnel.

* Arndt S, Kromeier J, Berlis A, Maier W, Laszig R, Aschendorff A. Imaging procedures after Bone-Anchored Hearing Aid implantation. The Laryngoscope 2007;117

Using phones and other accessories

The best way to use telephones and cell phones with your Baha sound processor is to hold the phone receiver close to the microphone inlet of your sound processor rather than close to your ear. Don't let your hand or the phone touch the sound processor, as this may cause it to whistle. When using Baha® Cordelle II, the phone receiver should be next to the microphone on the body worn unit.



Most landline telephones are "hearing aid compatible" i.e. they have a built-in telecoil. If you are a Baha Divino® or Baha Intenso™ user, you will need to attach the Baha telecoil accessory to your sound processor. Set the program switch to the position for external equipment, and increase the volume to a comfortable setting. For Baha® Cordelle II, the telecoil is built into the body worn unit, so all you need to do is switch to the Telecoil program.

The telecoil, FM receiver, and audio adapter are available as optional accessories. They are easy to order from your audiologist or your local Cochlear office. For the Phonak FM receiver, contact Phonak directly www.phonak.com.

Only Cochlear products and accessories, or products and accessories approved by Cochlear, should be used with each other to ensure the warranty is maintained.



FM Receivers

An FM system makes listening easier in noisy environments, such as in classrooms. A Phonak MicroLink FM receiver, specially designed for Baha sound processors enables the use of most Phonak FM transmitters.



Telecoil

The telecoil accessory may help you hear better when using a phone or in buildings with loop facilities, such as churches, theatres, and airports. The Baha® Cordelle II has a built-in telecoil so no accessory is required.



Audio adapter

Use an audio adapter to connect your Baha sound processor to a personal stereo, TV, mp3 player or computer. Always use the audio adapter to connect your Baha sound processor to any electrical or battery-operated equipment.

What to expect from your batteries

There are a number of factors that affect battery life. Brand type is one factor; low temperatures and hourly use are others. The programme and volume control settings – as well as the use of accessories such as FM equipment – can also affect the life of the battery.

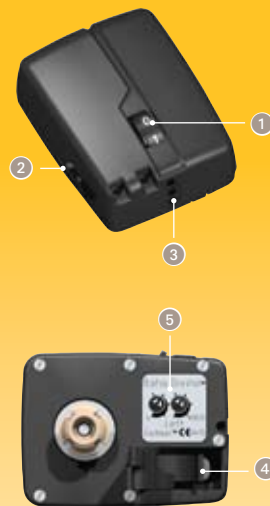
Which battery you use (type 13, 675 or 9V) will depend on which Baha sound processor you are using. Just remember that for the smaller type 13 and 675 batteries, the battery will begin to drain once you remove the plastic strip – even if the sound processor is not actually in use! The batteries delivered with your sound processor reflect Cochlear's latest battery brand recommendation.



Testing type 13 and 675 batteries

To test the battery, place it in the tester (provided in your Aftercare Kit) with the plus-mark facing upwards, and press it onto the metal band. The display screen will then indicate how much power is left. The more bars there are, the more power is left in the battery.

Your quick guide to Baha Divino®



- 1 Volume control and On/Off button:**
Move the wheel up to turn your sound processor on and to increase the volume. To decrease the volume and to turn your sound processor off, move the wheel down.
- 2 Programme switch:**
Programme 1 puts the microphone into omni-directional mode, where it will pick up sound from a 360° radius. Ideal for quiet surroundings.
Programme 2 activates the directional microphone. This will prioritise sounds coming from the front rather than sounds coming from behind, which makes it easier to hear speech in noise. Note that in this programme the electrical input is not activated, so any connected audio accessories will be muted.
- 3 Direct audio input:**
For connecting audio accessories.
- 4 Swing-out battery door:**
When changing the battery, remember to remove the plastic strip and make sure the plus-mark is facing **upwards**. Don't force the door shut, as it could break.

Note: Baha Divino® not shown in actual size.

Note: Never adjust the potentiometers **5** as this may void your warranty.

Consult the Baha Divino® User Manual for more detailed information.

Your quick guide to Baha Intenso™



1 **Volume control and On/Off button:**

Move the wheel up to turn your sound processor on and to increase the volume. To decrease the volume and to turn your sound processor off, move the wheel down.

2 **Programme switch:**

Programme 1 is the standard setting, suitable for most everyday situations.

Programme 2 is a comfort setting that may be useful in certain loud, adverse listening environments.

Programme E can be used when listening exclusively to input from an audio accessory, or as an instant mute, because it turns off the microphone.

3 **Direct audio input:**

For connecting audio accessories.

4 **Sliding battery door:**

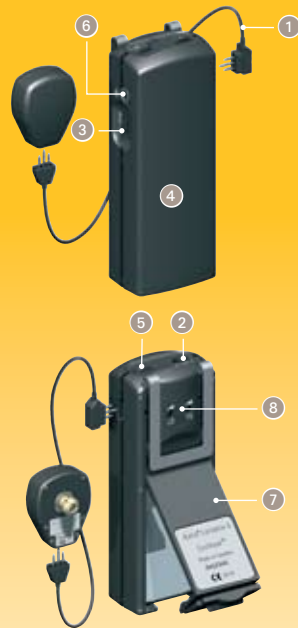
When changing the battery, remember to remove the plastic strip and make sure the plus-mark is facing **upwards**. Don't force the door shut, as it could break. Your sound processor will emit two beeps when the battery is low and needs to be changed.

Note: Baha Intenso™ not shown in actual size.

Note: Never adjust the potentiometers 5 as this may void your warranty.

Consult the Baha Intenso™ User Manual for more detailed information.

Your quick guide to Baha® Cordelle II



1 **Connector cable:** Connect the straight plug to the head worn unit and the angled plug to the body worn unit.

2 **Volume control and On/Off button:** Move the wheel to turn your sound processor on or off and to increase or decrease the volume.

3 **Tone switch:** The tone switch controls the frequency response of the sound processor. It can be set in three different positions:
N=Normal. Amplifies all frequencies equally.
H=High frequency emphasis. Reduces low frequency sounds which may improve speech understanding, especially in background noise.
L= Low frequency emphasis. May be especially useful during the first period after fitting as it allows you to gradually get used to high frequency sounds you have not heard in a long time.

4 **Built-in telecoil**

5 **Programme switch:** M= Microphone, MT=Microphone and Telecoil, T=Telecoil

6 **Direct audio input** for connecting audio accessories

7 **Flip-up battery cover:** When changing the battery, remember to use 9V batteries only. Make sure the plus-mark on the battery is facing the plus-mark in your body worn unit. Don't force the door shut, as it could break.

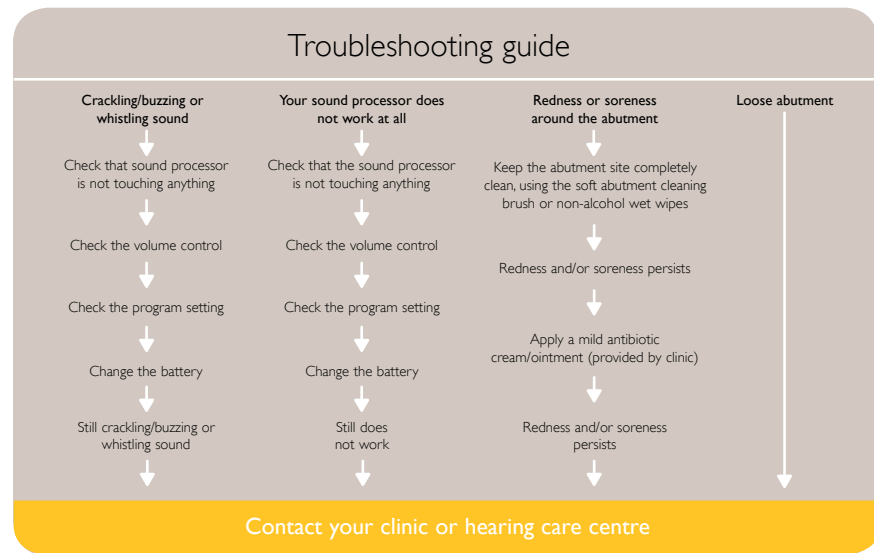
Note: Baha® Cordelle II not shown in actual size.

Note: Never adjust the potentiometers 8 as this may void your warranty.

Consult the Baha® Cordelle II User Manual for more detailed information.

Troubleshooting

If you experience physical problems or any difficulty using your Baha system, follow the guidelines listed below. If this fails to help, contact your hearing care centre.



Aftercare Kit

The following items are included in the Aftercare Kit:



Brochure and DVD



AudioWipes

Single pack wipe for cleaning the sound processor.



Alcohol-free wet wipes

Pack of 10 wipes for cleaning the abutment area.



Battery tester



Sound processor brush

Black brush with hard bristles for cleaning the plastic snap.



Abutment cleaning brush

White brush with soft bristles for cleaning the abutment area.



Mirror

Some of the items in the Aftercare Kit can be re-ordered. Please contact your local Cochlear distributor for more information.

About the DVD

Using your sound processor

Taking care of your abutment

Taking care of your sound processor

Audio accessories and telephones

Testing your sound processor

Baha® Softband

When to visit the clinic



For more information and advice, please contact your hearing care professional,
your local Cochlear office or visit the Cochlear website at www.cochlear.com

The Cochlear™ Promise

As a global leader in hearing solutions, Cochlear is dedicated to bringing the gift of sound to people all over the world. With our hearing systems, Cochlear has reconnected over 140,000 people to their families, friends and communities in more than 70 countries.

The Baha system provides a natural pathway to hearing and is a simple and effective hearing solution for many types of hearing loss. With this pioneering system, more people can experience the wonderful world of sound. For patients receiving any Cochlear hearing system, our commitment is that for the rest of your life we will be here to support you.

Hear now. And always.

Regional offices:

Cochlear Americas Centennial, USA Tel: +1 303 790 9010

Cochlear AG Basel, Switzerland Tel: +41 61 205 0404

Cochlear Ltd (ABN 96 002 618 073) Sydney, Australia Tel: +61 2 9428 6555

Local offices:

Cochlear Benelux NV Mechelen, Belgium Tel: +32 15 36 28 77

Cochlear Canada Inc Toronto, Canada Tel: +1 416 972 5082

Cochlear France S.A.S. St Aubin, France Tel: +33 811 111 993

Cochlear GmbH Hannover, Germany Tel: +49 511 542 770

Cochlear (HK) Ltd Hong Kong Tel: +852 2530 5773

Cochlear Korea Ltd Seoul, Korea Tel: +82 2 533 4450

Cochlear Italia SRL Bologna, Italy Tel: +39 051 741 9811

Nihon Cochlear Co Ltd Tokyo, Japan Tel: +81 3 3817 0241

Cochlear Nordic AB Mölnlycke, Sweden Tel: +46 31 335 14 61

Cochlear Europe Ltd London, UK Tel: +44 1932 87 1500

www.cochlear.com

Baha and Baha Divino are registered trademarks, and Baha Intenso is a trademark of Cochlear Bone Anchored Solutions AB.

Cochlear and the elliptical logo are trademarks of Cochlear Limited. AudioWipes is a registered trademark of Oaktree Products Inc.

© 2008 Cochlear Bone Anchored Solutions. All rights reserved. E81253 NOV08.